

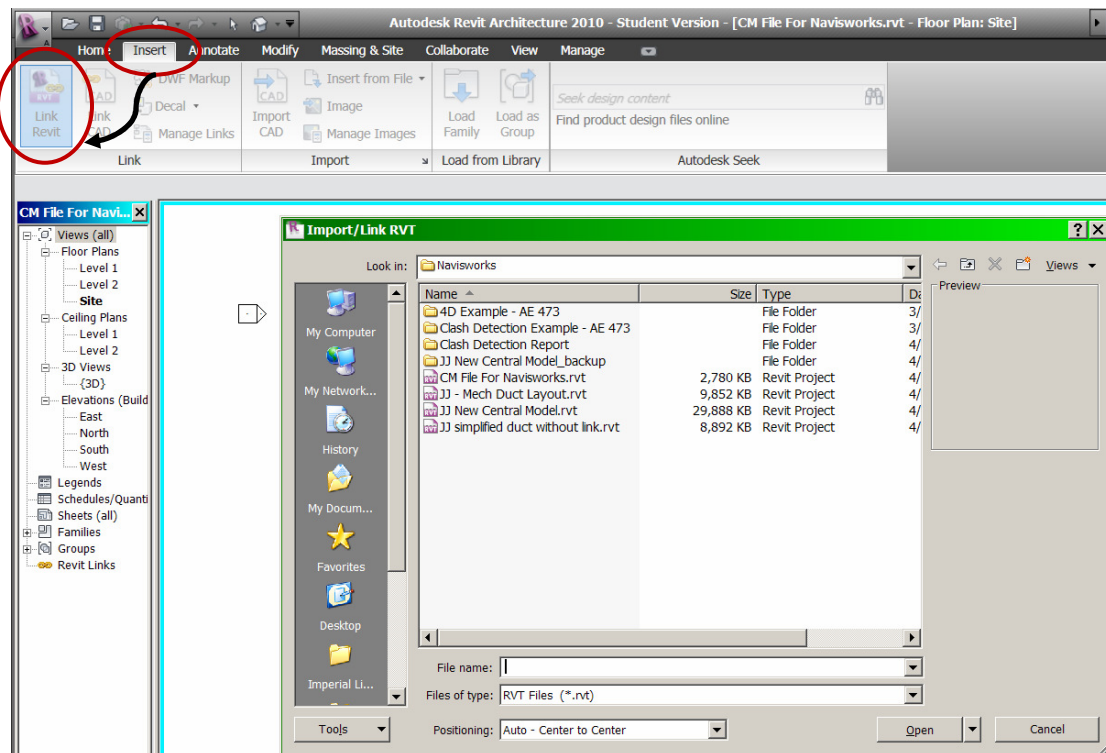
Creating Separate Models in Revit

Abstract

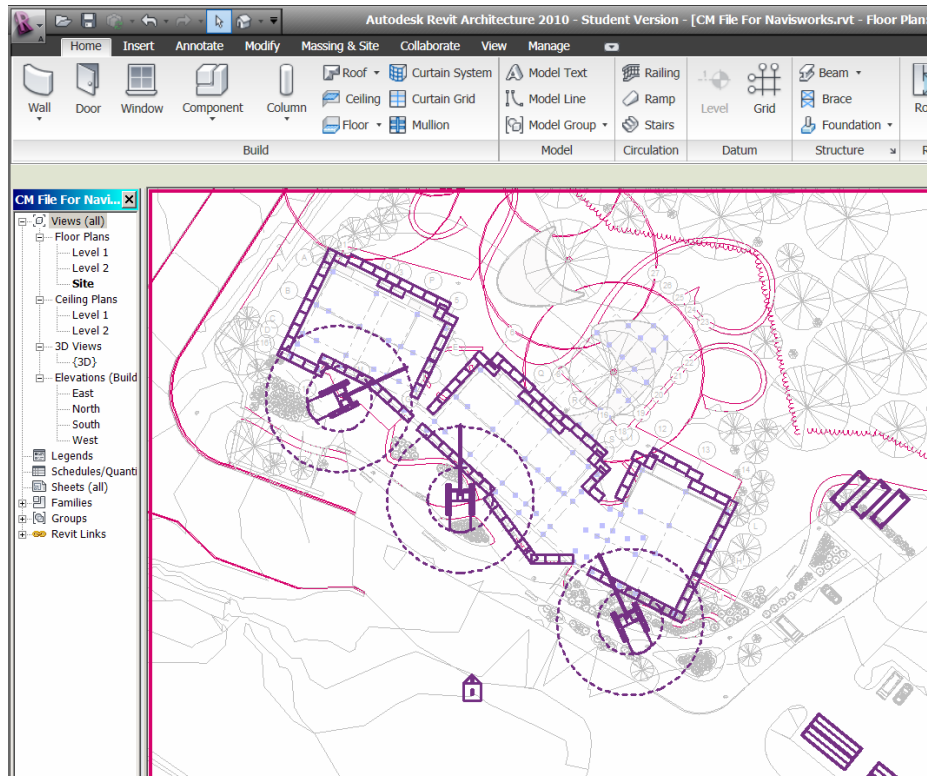
This document will provide a step-by-step process to creating separate models in Revit, and why it is important to model in this way as opposed to using one model with separate subsets.

Site Logistics Example

The first step in properly creating a separately linked model is importing the central architectural model into the new model desired. In this case, it's a site logistical model that shows both crane and scaffolding locations (for use in a 4D Navisworks file). You simply go to "Insert-Link Revit", and click on the central model's location.



Once the model is imported, you can begin adding scaffolding, cranes, trash/recycling, and site trailers to the model. It is important to link the central model first so that the origins of both systems/models match up when the links are removed later. Any links to other models must be removed before importing them into Navisworks to ensure that each system is properly organized and accounted for within the Navisworks file. Trying to export a Revit model with links can cause major problems in the orientation of systems within your Navisworks model.



As the central model or any other links become updated, you can simply refresh the links between models by going to the “Manage” tab in Revit, and selecting “Manage Links”.

